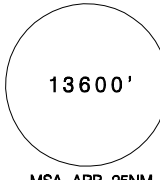
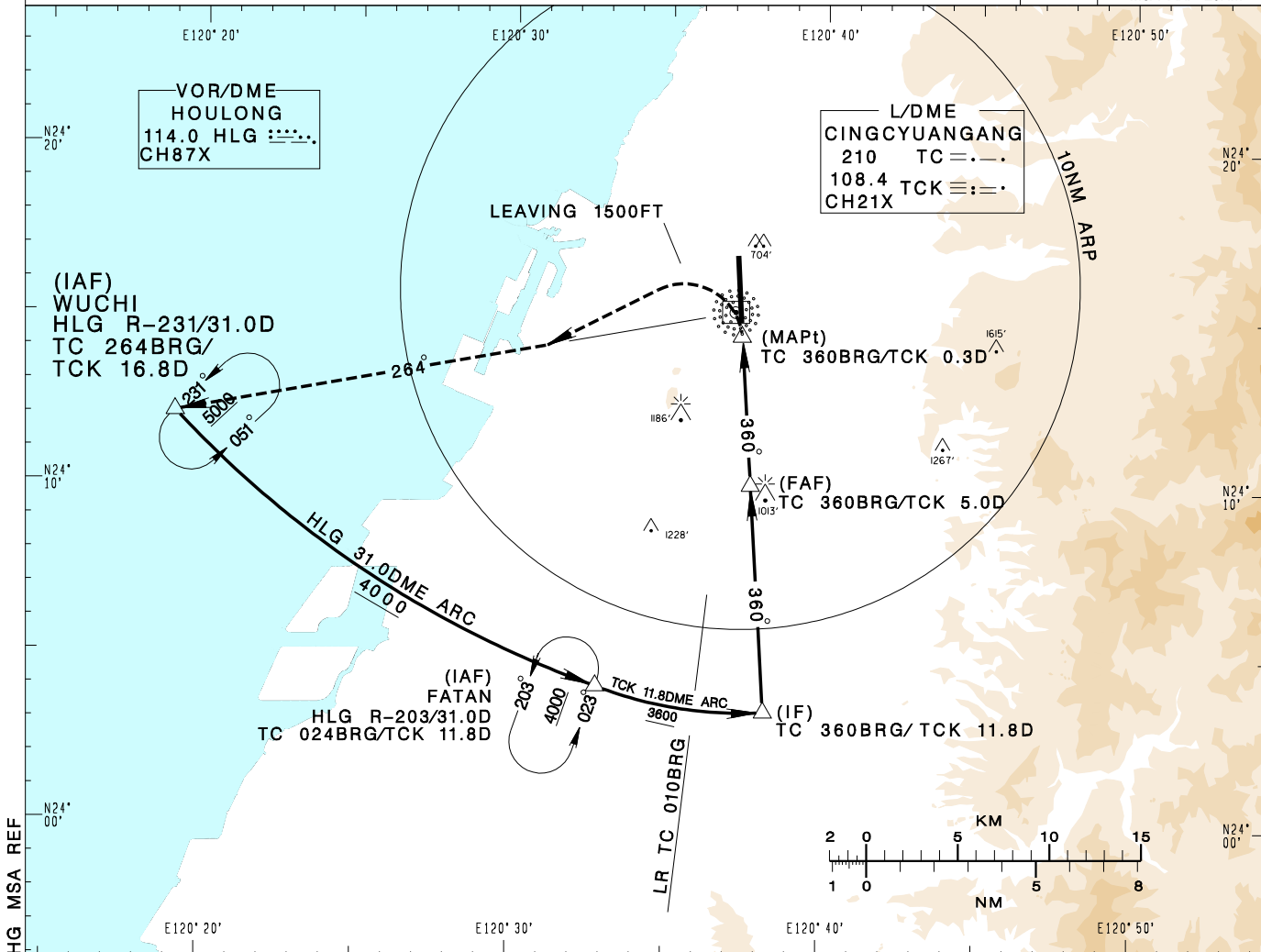


臺中/清泉崗機場
TAICHUNG/CINGCYUANGANG AD

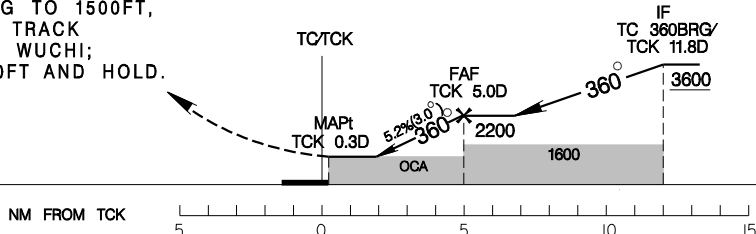
RCMQ
NDB RWY36

TAIPEI APP 130.1 129.6	TAICHUNG TWR 118.75 120.25	ATIS 127.75	 <p>13600'</p> <p>MSA ARP 25NM</p>		
Apt Elev: 665'		Rwy36 THR Elev: 663'		Trans Level: FL130	Trans Alt: 11,000'
BEARINGS ARE MAGNETIC; DISTANCES ARE NAUTICAL MILES; ELEVATIONS, HEIGHTS IN FEET					



DIST to TCK	3DME	4DME	5DME
ADVISORY ALT	1570	1890	2200

MISSED APCH:
CLIMB RWY HDG TO 1500FT,
TURN LEFT TO TRACK
TC 264BRG TO WUCHI;
CLIMB TO 5000FT AND HOLD.



MINIMA (OCA IN FT, VIS IN M, OCH IN FT)

CATEGORY	A	B	C	D
STRAIGHT IN	1360/1200 695	1360/1600 695	1360/2500 695	1360/2500 695
STRAIGHT IN (ALS OUT)	1360/1600 695	1360/1600 695	1360/3200 695	1360/3200 695
CIRCLING	1360/1900 695	1360/2800 695	1600/4400 935	1600/4800 935

NOTE
CIRCLING NOT AUTHORIZED
EAST OF RWY.

* DME REQUIRED

CHANGES: MAPt DEF; UPDATE MAG VAR AND LEG CRSL; CHG MSA REF